

SLIDESHOW TECHNICAL NOTE:

This slideshow template is wide screen 16:9 format.

This custom theme suggests a layout made with a standard typeface: Calibri regular and bold (by Microsoft).

The custom theme proposes a slideshow layout made with slidemasters.

The suggested layouts are only an indicative basis, which guide you in your choice of body text, color ranges...

In order to harmonize all Science&You slideshows, the background images present in the slidemasters are to be used.

The latter are also provided in an attached folder, in case you would like to create a new slidemaster, or create your own slide.

The following instructions have been made with MacOS ; desktop displays might appear slightly different with another operating system. Nevertheless, but the principle remains the same.



HOME PAGE

By default, 10 slides are displayed. They correspond to each 10 slidemaster. It should be preserved the order of the first 3 slides:

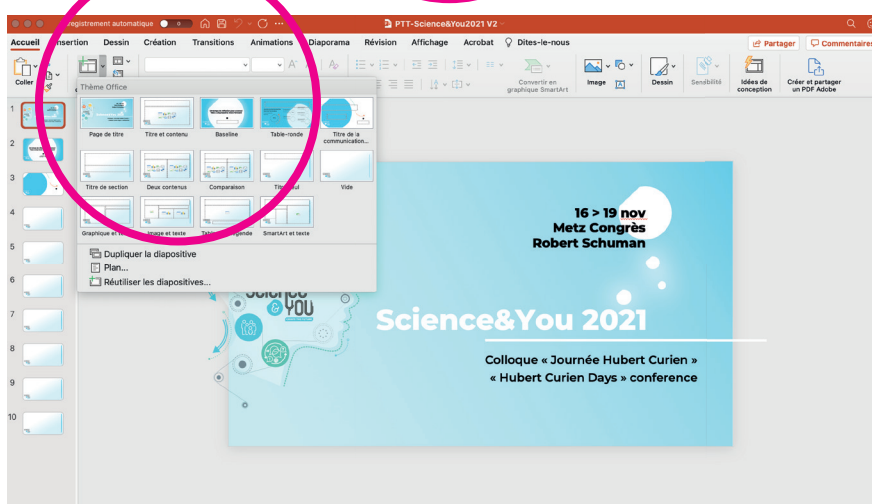
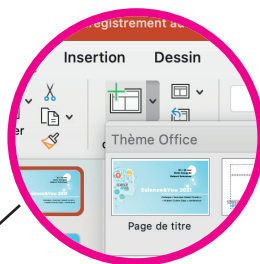
Slide 1: logos (non-editable)

Slide 2: conference title (non-editable)

Slide 3: speaker title (non-editable)

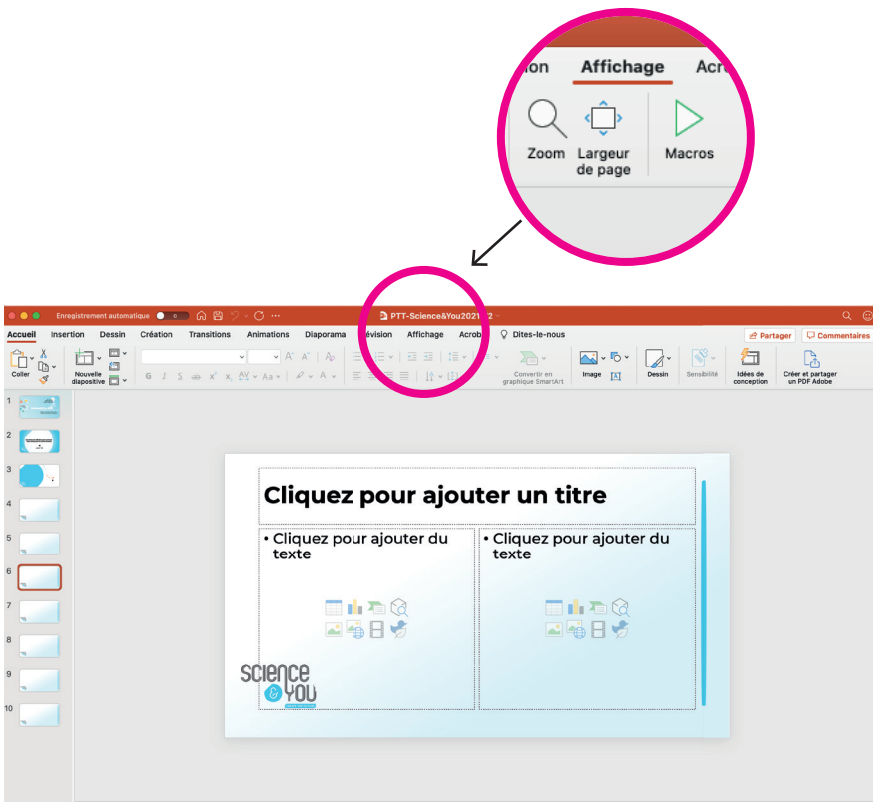
Then, you can choose between two summary displays: short or long

The following slides suggest different types of editable contents, which you can use at your convenience and in the order you decide.

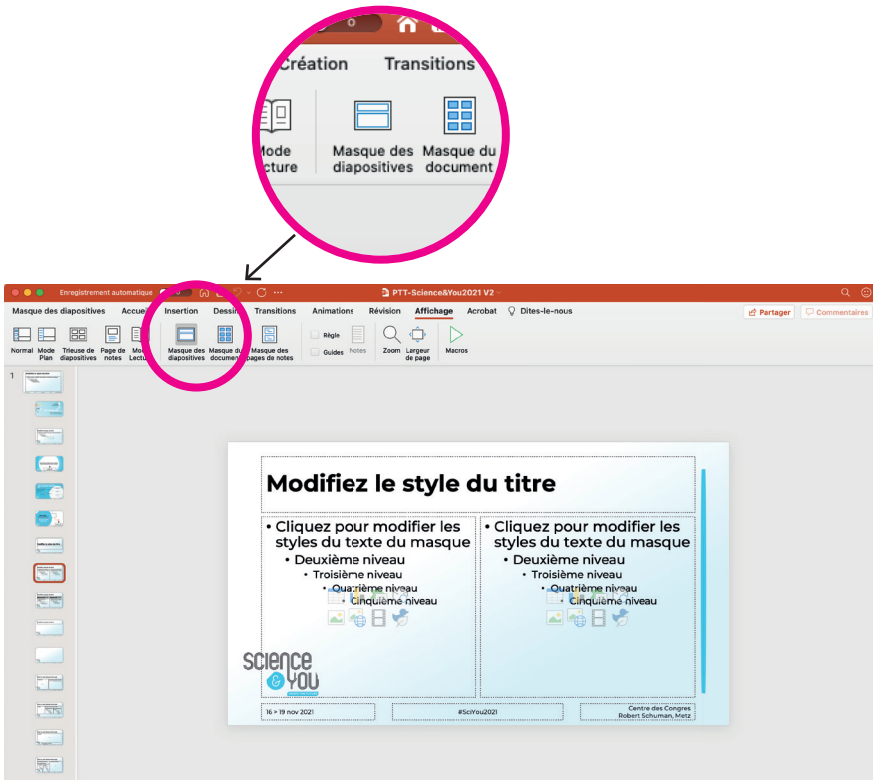


HOW TO ADD A NEW SLIDE

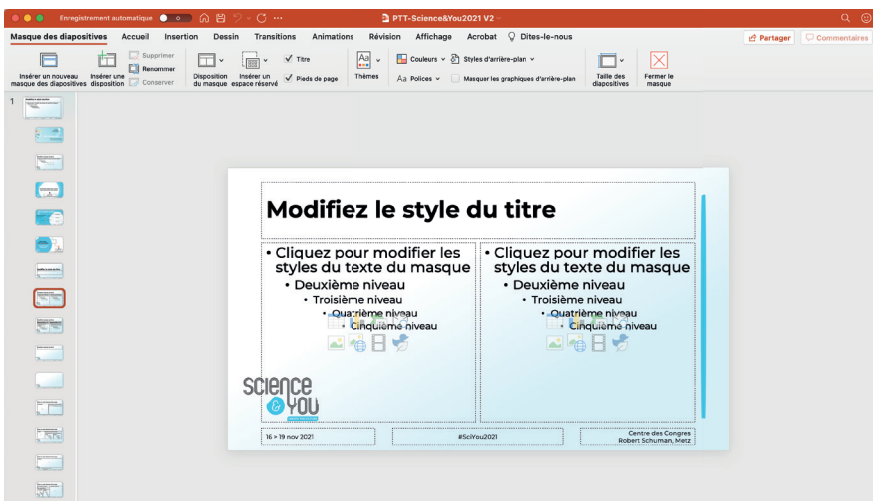
To add a new slide from the slide master of your choice, click on the arrow next to "new slide", and click on one of the 10 slide masters.



HOW TO CREATE OR ACCESS THE SLIDE MASTERS
Click on "view"



Then on "slide master"



You have access to the 10 S&Y slide masters